



38th SHAUNAVON HORSE SHOW

SATURDAY & SUNDAY, AUGUST 7 & 8 2021

SHAUNAVON RODEO GROUNDS—3 MILES WEST OF SHAUNAVON

SOUTHWEST MINI CIRCUIT SHOW

HERITAGE CIRCUIT SHOW

NAERIC APPROVED

CONCESSION ON SITE

JUDGE: B J Wolfe Bigger, SK.

TRAIL JUDGE: Roy Martin ,Maple creek.

THANK YOU

TO GOULET TRUCKING FOR SUPPLYING THE WATER
TRUCK FOR DUST CONTROL FOR THE HORSE SHOW



Saskatchewan Horse Federation

MISSION

The Saskatchewan Horse Federation delivers value to its member through initiatives in sport, industry, and recreation activities, while upholding standards of equine welfare.

VISION

The Saskatchewan Horse Federation is the voice and leader in an evolving and sustainable horse industry.

VALUES

- **EQUALITY** — Respecting and recognizing the equal worth of each individual. Equally accepting all, regardless of age, race, creed, religion, gender, sexual orientation, or economic background.
- **JUSTICE** — Following fair play.
- **RESPECT**— Expecting conduct that is honest, respectful, and honorable for all of its members.
- **LEADERSHIP** — The provision of ethical, educational, and technical guidance at all levels of operations of the Saskatchewan Horse Federation.
- **COMPETANCE** — Maintaining and improving current levels of knowledge and practice for the pursuit of equine activities of members.

SHF programs and services are available to all members. Services range from the offering of lower cost insurance for individual members to support in recreation, sport, education, breeds and industry. We are highly dedicated to the health and welfare of horses. Our strong and dedicated Board of Directors, elected annually at our AGM, enables us to serve our members to our fullest potential. We are the only equestrian body recognized by Sask Sport, and thus have a voice within the Government of Saskatchewan.



Tracy Bredahl

Director
Trucking Business Development

Suite 1810, 250 - 6th Avenue SW
Calgary, AB T2P 3H7

c 306-297-7572
p 403-514-0956 ext 229
f 403-295-7121
e tbredahl@torqenergy.com
www.torqenergy.com



Thank



You

Generous support has been given the Shaunavon Horse Show by individuals, business firms and service clubs in the form of donations of time and money over the years. A heartfelt 'Thank You' to all friends and patrons, for all your help, without which the Horse Show could not be a success.

Special thanks to our lifetime members

*Annette Horne
Denise Simmons
Herb Conrad
Carley Cooper
Barb Pearl
Donna Saunders*

CLASS SPONSORS

- ◆ AMY JOHNSTONE MEMORIAL #6
- ◆ B & A PETROLEUM LTD. #8
- ◆ SPENCER JOHNSTONE MEMORIAL #13
- ◆ GERALD KOOLEN #14
- ◆ DAWG INN #15
- ◆ AFFINITY CREDIT UNION #16
- ◆ MIKES VAC SERVICE #17
- ◆ ACCESS REALTY #19
- ◆ RAPLEY' RENA #20
- ◆ ELM TREE COTTAGE HAIR DESIGN #21
- ◆ SHAUNAVON DENTAL #22
- ◆ COWTOWN #23
- ◆ MERRIL & HATTIE SIMMONS MEMORIAL #24
- ◆ LARZ CONTRACTING #25
- ◆ SNACK SHACK #26
- ◆ IRON PONY SMALL ENGINES #28
- ◆ OVERTIME RESTURANT AND SPORTS LOUNGE #29 & #30
- ◆ VERNICE BALON #31
- ◆ ANDERSON & CO. #32
- ◆ LEAF & POWDER #33
- ◆ THE OLE BLACKSMITH SHOP #34
- ◆ PETER BALON MEMORIAL #35
- ◆ CORN WAYS #36
- ◆ NUTRIEN AG SOLUTIONS #37
- ◆ SHEEP CREEK FARMS #38
- ◆ BERGS HOME FURNITHING #39
- ◆ RANCY MCFADYEN #40
- ◆ A & B AUTO #47
- ◆ KATHI JOHNSON #52 & #85
- ◆ WESTERN FINANCIAL GROUP #53
- ◆ A & L STEVENSON HOLDINGS #54
- ◆ MAGS GLASS AND BODY #56 & #66
- ◆ DOTERRA #59
- ◆ KENDRA LARSON #67
- ◆ SUBWAY #71
- ◆ KIM HORNE CONTRACTING #75
- ◆ ROBERTSON IMPLEMENTS #78
- ◆ HORIZON CONSULTING #80 & 82
- ◆ SHAUNAVON ANIMAL CLINIC #81

HIGH POINT SPONSORS

- ◆ JUNIOR A BY KIM & JERREE HORNE
- ◆ JUNIOR B BY SHARON & RENA MCLEAN
- ◆ JUNIOR C BY SAGE VIEW FARM
- ◆ SENIOR BY JAE'S PHARMACY

SHOW COMMITTEE

President: Kim Horne

Vice – President: Lynnae Cromarty

Show Secretary: Joanne Thronberg (306-297-3082)

Directors: Sharon Johnson, Rena McLean, Kendra Larson, Sharon McLean, Eileen Sebastian, Joanne Thronberg

AGENDA

Can pick up #'s and Register on Friday, August 6th 6:00-9:00pm
at Rodeo Grounds

Saturday, August 7th, 8:00 am – Classes 1 to 51

Sunday, August 8th, 8:00 am – Classes 52 to 88

Admission to the grounds are free, office charge \$2 per horse.

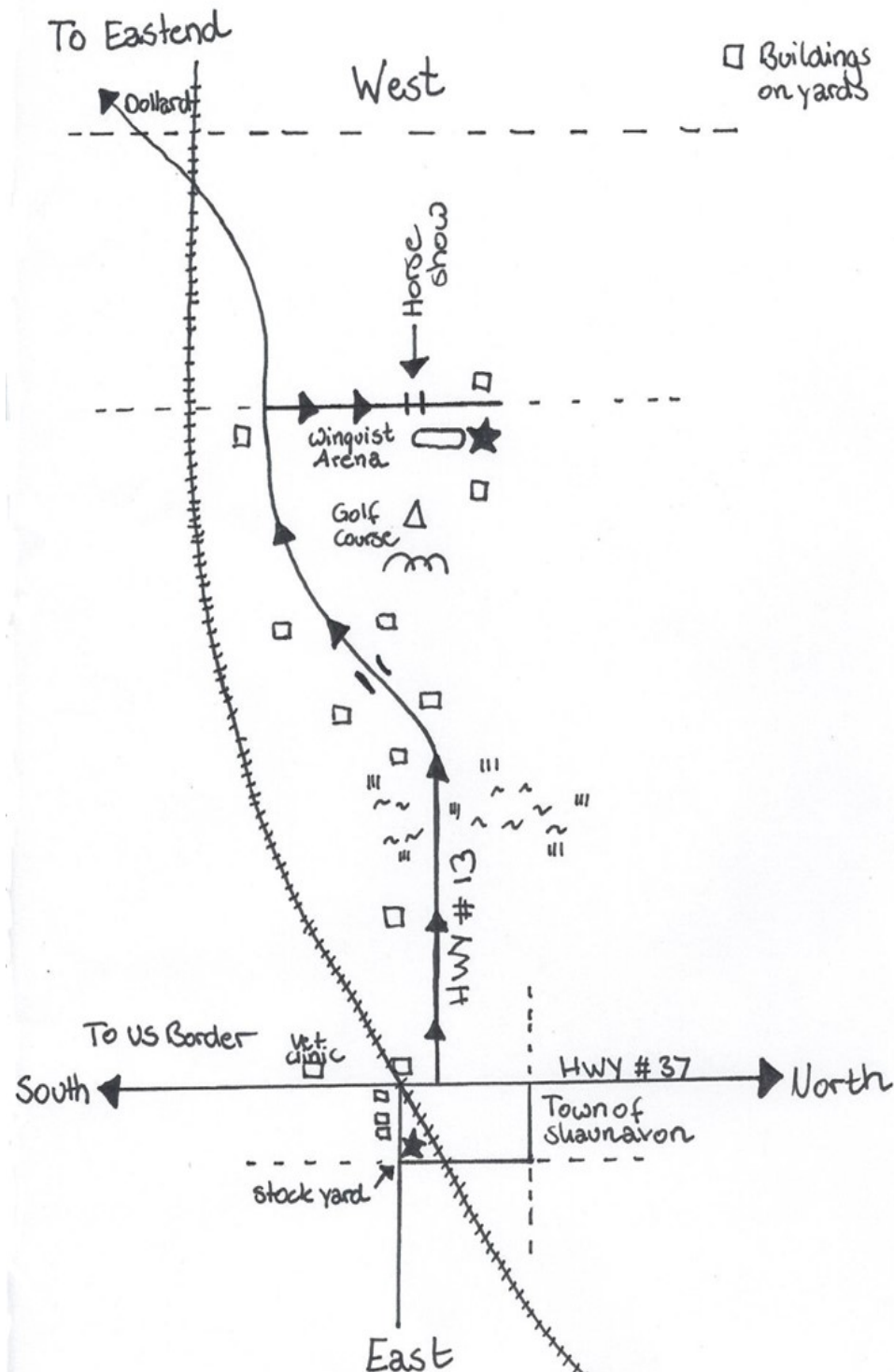
Concession Stand on Grounds

Pens are available at the Rodeo Grounds on a first come, first served basis

GENERAL INFORMATION

1. Entry fee - \$4 for Halter and Performance Classes, \$10 for Stake Classes.
2. Entries must be post marked by July 29th. Post entries will be double the original cost and must be in one hour before each day's show.
3. **Ribbons** to 4th place in all classes.
Prize money: All classes \$9, \$7, \$5
Stake Classes – Show keeps first 10%, classes paid out 40%, 30%, 20%, 10% on remainder of pot.
4. Age of rider will be as of January 1st of the current year:

Junior A – 15 to 17 years
Junior B – 12 to 14 years
Junior C – 11 and under
Pee Wee – 8 and under
Senior – 18 years and over
5. A junior Performance Horse is 5 years old or under.
6. In the event of sickness of a horse, entry money will be returned upon presentation of a vet's certificate. A substitute horse will be permitted at the discretion of the Show Committee.





In memory of our past, dedicated members

Don Shapley

Winston Stevenson

Dick Pearl

Dave Garvin



7. Exhibitors are responsible for having entries in the hitching ring 5 minutes before each class is called. Those not ready when called will not be allowed to enter the ring or compete. Gate attendant and Show Secretary must be notified when a conflict of classes arises and a gate hold is necessary.
8. High-Point Awards to one horse/rider combination in Senior, Junior A, B and C.
9. Optional insurance through SHF available: www.saskhorse.ca
10. A white start line will be used for Gymkana classes .

JC's Cakes & Catering
**Professional
Catering
& Fresh Baking**
Jenn & Chris Cragg
306-294-7457 or 306-294-7344

SHOW RULES AND REGULATIONS

1. All decisions made by the show committee are final.
 2. The show committee reserves the right to add to or amend to the rules, decide any point not covered by these rules, correct any error or make any necessary alterations in the rules, prize list or program.
 3. The show committee reserves the right to cancel or combine any classes if there are less than two entries in a class. If a class is cancelled, the entry fee will be returned.
 4. Excessive use of whips, either inside the ring or outside, will not be permitted.
 5. No persons other than the officials, steward or judge of the class may enter the show ring without the permission of the judge.
 6. Any exhibitor using the wrong number or having no number may be excused or disqualified from the class at the judge's discretion. Each horse will be given a number, which will be worn for each class. One horse, one number.
 7. Handlers of stallions must be the age of 15 years or older.
 8. Protests must be made in writing and addressed to the show secretary within 24 hours of the holding of the class, accompanied by a \$25 deposit. This deposit will be forfeited if the protest is not sustained.
 9. All riders should be appropriately dressed, Western Class riders should be attired in Western clothes, hats (approved helmet required under the age of 18, optional over the age of 18) and boots. In all English Classes, riders should be attired in suitable riding habit. HERITAGE RULES TO BE ADHERED TO AS WRITTEN. **SHF Sanctioned events require every person under the age of 18 to wear an approved helmet at all times when mounted on the grounds.**
 10. The age of the horse shall be reckoned beginning on the first of January in the year in which the animal was foaled.
 11. Mechanical hackamores, martingales and tie-downs are prohibited, except Gymkhana classes. Curb chains must be at least ½" in width and lie flat against the jaws of the horse.
- *64. SENIOR WESTERN PLEASURE – sponsored by .
 - *65 JUNIOR A WESTERN PLEASURE –
 - *66. JUNIOR B WESTERN PLEASURE – sponsored by
 - *67. JUNIOR C WESTERN PLEASURE - SUBWAY
 68. PEE WEE WESTERN PLEASURE
 69. PEE WEE HORSEMANSHIP
 70. LEAD LINE EQUITATION–Pee Wees competing in other classes not eligible –
 - 71 WALK & TROT EIGHT YEARS AND UNDER sponsored by KIM HORNE CONTRACT
 - *72. SENIOR HORSEMANSHIP
 - *73. JUNIOR A HORSEMANSHIP— Sponsored by
 - *74. JUNIOR B HORSEMANSHIP – sponsored by ROBERTSON IMPLEMENTS
 - *75. JUNIOR C HORSEMANSHIP— Sponsored by
 - *76. SENIOR WESTERN RIDING – . Sponsored by HORIZON CONSULTING
 - *77. JUNIOR A WESTERN RIDING – sponsored by SHAUNAVON ANIMAL CLINIC
 - *78. JUNIOR B WESTERN RIDING—Sponsored by HORIZON CONSULTING
 - *79. JUNIOR C WESTERN RIDING
 - *80. JUNIOR HORSE WESTERN PLEASURE –
 81. JUNIOR REINING HORSE - sponsored by KATHI JOHNSON
 - *82. OPEN REINING, STAKE CLASS – must show in classes 25-28, 81
 - *83. OPEN WESTERN PLEASURE STAKE – must show in classes 65-68
 84. OPEN WESTERN PLEASURE PAIRS -
 85. OPEN WESTERN PLEASURE PAIRS

SUNDAY, AUGUST 11TH – 8:00 A.M.

- *52. SENIOR ENGLISH PLEASURE – sponsored by KATHI JOHNSON
- *53. JUNIOR A ENGLISH PLEASURE – sponsored by—WESTERN FINANCIAL GROUP
- *54. JUNIOR B ENGLISH PLEASURE – sponsored by—Sponsored by A & L STEVENSON HOLDINGS
- *55. JUNIOR C ENGLISH PLEASURE—Sponsored by
- *56. SENIOR ENGLISH EQUITATION - Sponsored by MAGS GLASS AND BODY
- *57. JUNIOR A & B ENGLISH EQUITATION –
- *58. JUNIOR C ENGLISH EQUITATION
- *59. OPEN ROAD HACK – sponsored by DOTERRA
- *60. ENGLISH PLEASURE JUNIOR HORSE
- *61. OPEN ENGLISH PLEASURE STAKE – must also show in one of Classes 52-55 –
- *62. OPEN SHOW HACK
- 63. OPEN ENGLISH PLEASURE PAIRS –

- 12. White Start Line will be used for Gymkana classes .
- 13. Judge has the right to divide classes. Judge’s decision is final .
- 14. All dogs must be on leash and under control on grounds at all times .
- 15. Horses to be shown as entered, no change of rider without permission of show committee. A horse may be ridden by more than one rider but cannot compete against itself. (Example: A junior rider and a senior rider.)
- 16. Nominated riders are eligible to earn points from placings in Heritage classes and these points will count towards year end awards. Please ensure your SHF membership is current and that you have nominated if you are interested in accumulating points for the awards. To qualify for heritage Provincial Finals Sept 27th-29th, 2019, you must attend a minimum of two Heritage shows and have placed in the top 5 in a division to be eligible.

Note: Asterisk (*) denotes ‘Heritage Circuit Classes’ promoted by the Saskatchewan Horse Federation (S.H.F.)

- 17. **Naeric nominated horses must have the same name the horse is registered with in the Naeric Advantage Program listed on the entry form . They will go by the listed name in the results to verify Naeric nomination for points.**

CLASS SPECIFICATIONS

1. **Halter Classes** – Horses to be shown in only one confirmation class.
2. **Breed Halter Classes, any age** – They must show breed characteristics and one parent must be registered, Photostat copy of registration must be available on demand.
3. **Showmanship** – Shown at halter – 50% showmanship and 50% grooming.
4. **Lead line Equitation** – Open to any rider 7 years and under. Lead Line to be handled by a member of immediate family or trainer.
5. **Walk and Trot** – 8 years and under. To walk and trot both ways in the arena.
6. **Equitation Classes** – To be judged for seat, hands, ability and general appearance. Horse or pony not judged. In 'Basic Seat', Hunt attire is required. In Horsemanship Classes western attire is required.
7. **Show Hack** – Horses to enter ring at walk. To be shown at a walk, trot, canter and a hand gallop, (collected and extended gaits to be called for) and to stand quietly. To be judged on performance, quality, conformation and manners.
8. **Western Reining** – Judged on performance. Reining pattern posted at least one hour before this class.
9. **English Pleasure** – To be shown at a flat-footed walk, normal trot and easy canter. Extended trot and hand gallop at judge's discretion. Medium to light contact to be maintained. To be judged on performance, conformation and manners.
10. **English Pairs** – as above.
11. **Stake Classes** – To be eligible, horse must be entered, shown and judged in classes as indicated (see Stake Class).
12. **Trail** – To be shown over and through obstacles, with a time limit per obstacle.

IRON PONY SMALL ENGINES

#49 - 2 Avenue West, Shaunavon
Phone:306.297.3558 Fax:306.297.3528 Toll-Free:1.855.IRON.PONY
Factory Authorized Sales and Service since 2009!

The Home of **COUNTRY CLIPPER**
Flip-Up Deck & Joystick Steering Standard On ALL Models!
Other models also available - See store for details!



Challenger Boulevard

BCS THE BEST TILLER ON EARTH

and So Much More!

- All Gear Drive - NO Belts, NO Chains
- Handles Rotate for Front & Rear Mount Attachments
- Change Implements in less than a Minute
- Best Warranty in the Industry



CRIDOG & STRATTON KOHLER engines Tecumseh Power OREGON HONDA ENGINES

Jiffy SNOWDOG COUNTRY CLIPPER Jonsered

Find us on Facebook info@ironpony.ca www.ironpony.ca
www.facebook.com/IronPonySmallEngines

ACCREDITED BUSINESS

Nutrien *Ag Solutions*[™]

Shaunavon Branch

Stop in and see us for all your
Chemical, Seed, Forage, and
Fertilizer needs.

Or give us a call @
306-297-4121

13. **Road Hack** – Horses to enter the ring at a walk. To be shown at a walk, trot, strong trot, easy canter and hand gallop. To be judged on performance, conformation, substance and manners.
14. **Western Pleasure** – To be shown at a flat-footed walk, jog and lope (hand gallop at judge's discretion) both ways of the ring on a reasonably loose rein. Classes may be divided at judge's discretion. A junior horse may be shown in a snaffle bit.
15. **Western Riding** – Rail work at judge's discretion.
16. **Novelty Costume Class** – Any type of costume may be worn. To be judged 50% costume and 50% performance.

SOUTHWEST MINI CIRCUIT MEMBER SHOWS

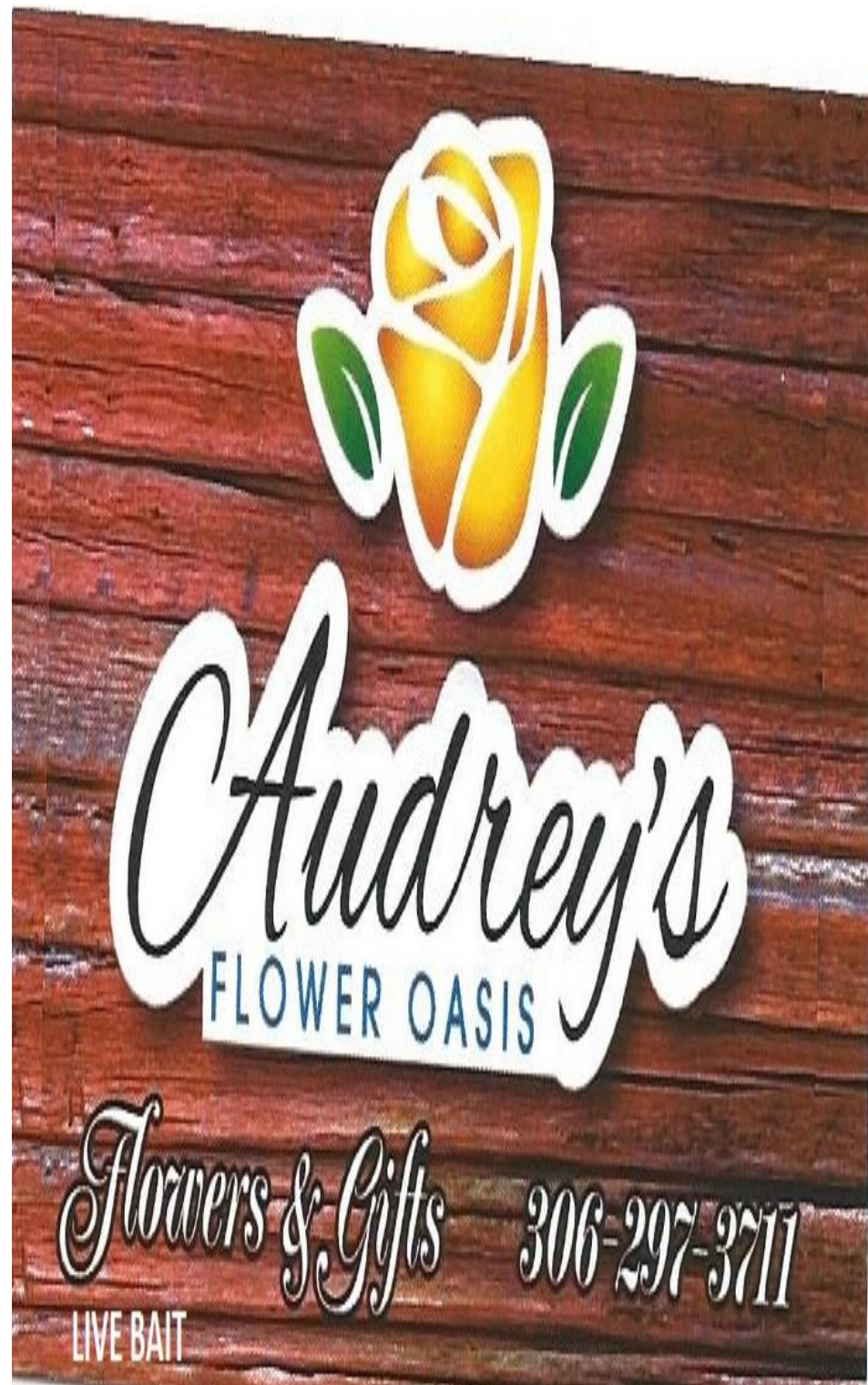
See Facebook page under 'Southwest Mini Circuit'
for current event and contact info

SWIFT CURRENT	JULY 9-11
MEDICINE HAT	JULY 23-25
EASTEND	JULY 25
SHAUNAVON	AUG 7 & 8
MAPLE CREEK	AUG 14 & 15

Yearend **High Points Awards** are awarded to Junior A,B,C and Senor Riders for Western Performance, English Performance, Junior Horse and Speed Horse, as a horse and rider combination. There is also a Halter Horse Award (halter horse need not to have the same handler except for All-Around Award).

The **All-Around High Point Champion Horse and Rider** must earn points in three out of five divisions: Showmanship, Halter, Western, English and Speed Classes, as a horse and rider or handler combination.

Points Awarded: First place earns 5 points for 6 or more horses in a class, but only 3 points if only 4 horses in the class. Riders must earn points in at least 2 shows.



ACCESS

REAL ESTATE INC.

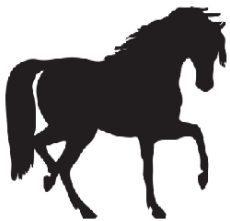
IS PROUD TO
SUPPORT
THE
SHAUNAVON
HORSE SHOW

Contact us for all your Farm, Residential, and Commercial property needs.

361 Centre Street

Shaunavon, Sk

1-306-297-3771



SCHEDULE OF CLASSES

SATURDAY, AUGUST 10TH – 8:00 A.M.

Breaks to be Announced

1. FOALS OF SADDLE TYPE
2. YEARLINGS OF SADDLE TYPE
3. 2 YEAR OLD OF SADDLE TYPE
4. 3 YEARS OLD OF SADDLE TYPE
5. 4 YEAR OLD AND OLDER OF SADDLE TYPE
6. MARE WITH FOAL AT FOOT (any height) – sponsored by AMY JOHNSTONE MEMORIAL
7. PONY ANY AGE 13.2 HANDS AND UNDER&
8. QUARTER HORSE – sponsored by B & A PETROLEUM LTD.
9. ARABIAN HORSE – sponsored by
10. JUNIOR CHAMPION AND RESERVE: 1st and 2nd in classes 1-4 and 7-9 if 3 years and under (\$15 prize)
11. SENIOR CHAMPION AND RESERVE: 1st and 2nd in classes 5-9 if over 3 years (\$15 prize)
12. GRAND CHAMPION AND RESERVE: 1st and 2nd in classes 10 & 11
- *13. SENIOR SHOWMANSHIP – sponsored by SPENCER JOHNSTONE MEMORIAL
14. PEE WEE SHOWMANSHIP—sponsored by Gerald Koolen
- *15. JUNIOR C SHOWMANSHIP – sponsored by DAWG INN
- *16. JUNIOR B SHOWMANSHIP – sponsored by AFFINITY CREDIT UNION
- *17. JUNIOR A SHOWMANSHIP— sponsord by MIKE’S VAC SERVICE
- *18. SENIOR WESTERN REINING—sponsored by
- *19. JUNIOR A WESTERN REINING—sponsored by Access Realty



- *20. JUNIOR B WESTERN REINING—sponsored by RAPLEY 'RENA
- *21. JUNIOR C WESTERN REINING— sponsored by ELM TREE COTTAGE
- *22. SENIOR TRAIL—sponsored by SHAUNAVON DENTAL
- *23. JUNIOR A TRAIL – sponsored by COWTOWN
- *24. JUNIOR B TRAIL – sponsored by MERRIL & HATTIE SIMMONS MEMORIAL
- *25. JUNIOR C TRAIL – sponsored by LARZ CONTRACTING
- 26. JUNIOR HORSE TRAIL – sponsored by SNACK SHACK
- 27. NOVELTY COSTUME CLASS—Sponsored by
- 28. SENIOR 4-H EQUITATION (ages 16-21) Sponsored by IRON PONY SMALL ENGI
- 29. JR. & INTERMEDIATE 4-H EQUITATION (ages 9-15)- Sponsored by OVERTIME RESTAURANT & SPORTS LOUNGE
- 30. CLOVERBUD 4-H EQUITATION (ages 6-8) – sponsored by OVERTIME RESTAURANT AND SPORTS LOUNGE

Start line will be used for Gymkana

- *31. SENIOR BARRELS – Sponsored by VERNICE BALON
- *32. JUNIOR A BARRELS – Sponsored by ANDERSON & COMPANY
- *33. JUNIOR B BARRELS – Sponsored by LEAF & POWDER
- *34. JUNIOR C BARRELS – Sponsored by THE OLE BLACKSMITH SHOP
- 35. PEE WEE BARRELS - Sponsered by PETER BALON MEMEORIAL
- *36. OPEN JACKPOT BARRELS - Sponsored by CORN WAYS
- *37. SENIOR POLE BENDING— Sponsored by NUTRIEN AG SOLUTIONS
- *38. JUNIOR A POLE BENDING—Sponsored by SHEEP CREEK FARMS
- *39. JUNIOR B POLE BENDING—Sponsored by BERGS HOME FURNISHING
- *40. JUNIOR C POLE BENDING—Sponsored by RANDY MCFADYEN
- *41. JACKPOT POLE BENDING
- *42. SENIOR STAKE RACE
- *43. JUNIOR A STAKE RACE

OVERTIME >>>

RESTAURANT AND SPORTS LOUNGE



910 3RD AVE. W
SHAUNAVON, SK

RESTAURANT 306-297-3907

FAX 306-297-3193

CELL 306-628-7429

OVERTIME4444@HOTMAIL.CA

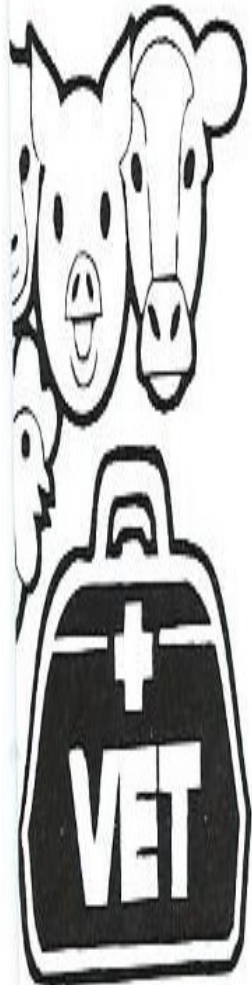
OVERTIMERESTAURANT.CA

LOOK US UP ON FACEBOOK

Shaunavon Animal Clinic

Dr. Ken Cadieux

Large & Small Animal Vet



Hwy 37 South

Box 369 Shaunavon, SK S0N 2M0



306-297-3455



cadieux@sasktel.net



*44. JUNIOR B STAKE RACE

*45. JUNIOR C STAKE RACE –

46. PEE WEE STAKE RACE


*47. OPEN KEY HOLE RACE—Sponsored by A & B AUTO

48. SR. & JR. A RING SPEARING

49. JR. B & JR. C RING SPEARING

50. SR. & JR. A FLAG RACE

51. JR. B & JR. C FLAG RACE



doTERRA

▶ Kathy Towle
Wellness Advocate
Personal Wellness Coach
WA# 2167279

☎ (306) 297-3132
✉ ktowle@yourlink.ca
🌐 mydoterra.com

MNP LLP

Box 897
424 Centre Street
Shaunavon, SK S0N 2M0

P: 306.297.3888
F: 306.297.2128

MNP.ca

ACCOUNTING > CONSULTING > TAX

SHEEP CREEK FARMS

Dog Grooming | Boarding | Training

- Basic Grooming (no cats please)
- Boarding
- On-Going Obedience Classes
- Stock Dog Training on sheep
- Clinics & Seminars Offered



JAMIE GARDNER *Call or Text* 306-294-7604

THE SNACK SHACK

Byllie-Rae & Kevin Szwetz
owner operated

387 Centre St. (306) 297-3828
Shaunavon, Sk. S0N 2M0

email: kbszwetz@sasktel.net
www.shaunavonsnackshack.com

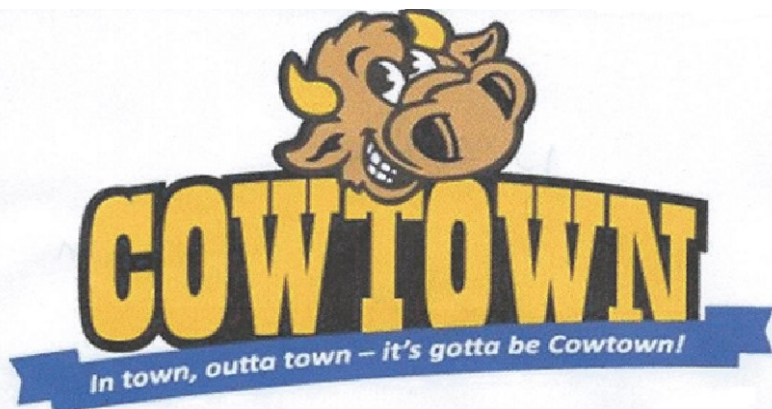
More Than A Corn Maze!

Harvey & Heather Schermerhorn

306-297-9130

contact@corn-ways.com

www.corn-ways.com



1511 BATTLEFORD TRAIL EAST
 SWIFT CURRENT, SK.
 S9H 5S4
 306-778-1010

WESTERN WEAR - TACK
 ANIMAL HEALTH -PET
 GIFTWARE
 MONTANA SILVER

B & A Petroleum Ltd

Your Petro-Canada Bulk Station in Shaunavon & the South West



711 3rd Ave W, Phone: (306) 297-1400
 Shaunavon SK S0N2M0 After Hours Cell: (306) 741-8150

R.P.M. AUTO CENTRE

** COMPLETE CAR & TRUCK SERVICE **
** PASSENGER CAR & LIGHT TRUCK TIRES **
** FUEL INJECTION SPECIALIST **

WAYNE FROHLICH, Owner
 342 - 1st St. E.
 Shaunavon, Sask. S0N 2M0
 P (306) 297-2555
 F (306) 297-3939

Terry & Kathy Towle

Dog Boarding and Daycare,
 Sheep and Lamb Sales,
 Hay for sale occasionally

Box 305,
 Shaunavon Sask,
 S0N 2M0
306-297-3132
tktowle@yourlink.ca

Lynnae Cromarty
 RMT
 Shaunavon, SK

Therapeutic Massage
 General Relaxation
 Hot Stone

1-306-294-0091
 Cash or Cheque only
lcromarty-rmt.vpweb.ca



BUMPER TO BUMPER
Auto Parts Professionals

RV AUTO PARTS

**FOR ALL YOUR AUTOMOTIVE
AND AGRICULTURAL PARTS**

SHAUNAVON
875 3RD AVE WEST
306-297-2234

FRONTIER
112 2ND AVE WEST
306-296-2234



Proud supporters
of the
Shaunavon Horse Show

Affinity
Credit Union

Shaunavon Branch
306.297.2635

Cooper
Plumbing and Heating Ltd.

JEFF COOPER - owner

Journeyman Plumber / Domestic & General Gas-fitter
FAX 306 297-2410

Ph: (306) 297-2400 cooperplumbing@me.com

Tel-Rite

Agent for TS&M Supply

Ryan Wallis
Branch Manager

Tel-Rite Services Ltd.
305 Highway #37
Shaunavon, SK S0N 2M0

Phone: (306) 297-2300
Cell: (306) 297-8848
Fax: (306) 297-9555
Email: ryan.wallis@dnw.com



**ANDERSON
& COMPANY**

James G. Anderson, Q.C.
Neil G. Gibbins
Morris A. Froslic
Joel P. Friesen

Tyler McCuaig
Erin A. Connick
Ryan J. Plewis
Jean P. Jordaan
(Student-at-Law)

- Wills & Estates
- Residential & Commercial Real
- Farm & Ranch Legal Services
- Business & Commercial Law
- Family Law
- Criminal Law

Maple Creek, 42 Pacific Ave..... 306-662-2122 Shaunavon, 23 - 3rd Ave. E.....
Gravelbourg, 209 Main St..... 306-648-2582 Ponteix (Located in town office)

(306) 773-2891

51 - 1st Ave NW, Swift Current, SK • Fax: (306)
Mailing Address: Box 610 Swift Current, SK S

E-mail: anderson.company@andlaw.ca • www.andersonandcomp

A wise choice!



Kelly Ann's Hidden Hilten Motel
Clean, quiet, comfortable rooms

(306) 297-4100

352-5th Street West, Box 834
Shaunavon, SK S0N 2M0

Locally owned and operated by:
Marcel & Kelly Ann Bussiere

hairanoia

Cuts & Crystals

Deb Dewhurst

Call or Text for appointment:

306-297-9109

Box 533 | 322 Centre St. | Shaunavon, SK S0N 2M0

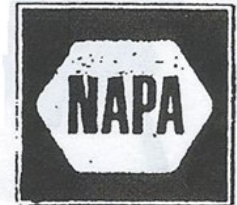


NEW HOLLAND

flexi:coil

Robertson Implements
(1988) Ltd.

"Serving the farming community
for over 80 years"



BOX 1328, SHAUNAVON, SK.
BUS. 297-4131 FAX 297-3058

Kornfeld Electric Ltd.

306-294-7950

Riley Kornfeld

Owner/Journeyman Electrician

kornelect@hotmail.com

Residential-Commercial-Agricultural

★ RANCH HOUSE ★ MEAT COMPANY INC.

EST. 2011

#473 Centre Street, Shaunavon, SK.

VINCE STEVENSON, Owner

CALL 306-297-4050

306-297-7950 CELL

ranchhousemeatcompany@gmail.com

Proud
supporters of
Farmers & Ranchers
in SW Sask.

THE  OLE
BLACKSMITH
SHOP

Antiques & Collectables

195 2nd Ave. West Shaunavon, SK

306.297.3319

classictractor@hotmail.ca



WORLD FINANCIAL GROUP
INSURANCE AGENCY
OF CANADA INC.

Jodie Cooper
Insurance Agent

Office: 306.297.7955

Fax: 306.297.2410

jcooper07esec@wfgmail.ca

Po Box 1043

Shaunavon, SK S0N 2M0



Western
Financial
Group

MORE MARKETS
MORE SERVICE
IT MAKES SENSE

You Can Insure Your Horse As Well As Cattle
We offer insurance on your Farm, Home, Commercial,
Auto, Travel, Life, Disability, Health, Group Benefits,
Also Guaranteed Seniors Life Insurance. 1-800-667-0669
306-297-2669



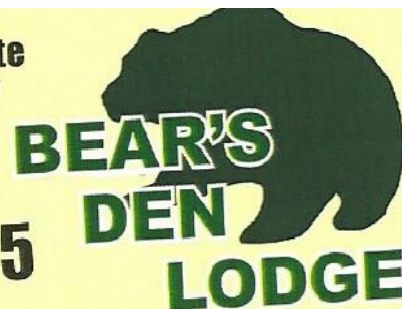
SHAUNAVON DENTAL

DR. ANDREW STOLL, D.M.D

347 CENTRE ST, Box 1479
SHAUNAVON, SK S0N 2M0
DRANDREWSTOLL@GMAIL.COM

PHONE: 306-297-2659
FAX: 306-297-2650
FIND US ON FACEBOOK

- Daily/Weekly/Monthly Rate
- Fridge/Microwave/Flat TV
- Free Meal Coupon
- Free Wi-Fi



Phone **(306) 297-2975**

Jason Lee

Address 554 5th Ave. W. Shaunavon SK S0N 2M0 (Box 697)

Website www.bearsdenlodge.ca

Email bearsden2975@gmail.com



Brad Campbell
Branch Manager

Cell: 306.294.7662

Email: brad.campbell@apexdistribution.com
www.apexdistribution.com

DISTRIBUTION • ADVANCED SOLUTIONS • REMINGTON • VALVE SERVICES

Office: 306.297.3722 Fax: 306.297.3724

P.O. Box 1204 - Hwy 37 Shaunavon, Saskatchewan S0N 2M0



DRUG MART

O: 306-297-2233
F: 306-297-5583
E: rxdm3004@rxdm.ca

P.O. Box 9, 353 Centre Street
Shaunavon, SK S0N 2M0
www.therxdrugmart.com

Shaunavon Physical Therapy Clinic



306-297-3010

Providing Treatment of:

- Back and Neck Injuries • Joint and Muscle Injuries
- Sport Injuries • Arthritic Conditions

Physiotherapy, exercise programs, acupuncture, spinal traction, massage therapy available.

Dianne Greenlay, B.P.T., Licensed Physiotherapist

505 Centre Street, Shaunavon

SHAUNAVON PIZZA

Regular Hours — 11am to 9pm

Monday to Saturday

306-297-2700

LOREN'S MACHINE SHOP

MACHINE SHOP & WELDING SERVICE

TELEPHONE

BUS: (306) 297-2315

RES: (306) 297-2854

ANDREW COX

OWNER

174 CENTRE ST.
SHAUNAVON, SASK.

S0N 2M0

HISTORIC SHAUNAVON HOTEL

EST.
1913

*Serving Spirits
Since 1913*

TYSON RAPLEY

owner/operator

Horse trainin' and Horse tradin' done here



Box 13

Bracken Sk

son Ogo

(306) 661-7431

RAPLEY'RENA

MIKE'S VAC SERVICE

- Septic Tanks
- Rotor Rooter



Cell: 306-297-8664



- Truck & Trailer
 - Parts Store
 - Service & Repair
 - SGI Safety
- Kioti Utility Tractors
- C Jay Trailer Sales

306-297-1313 magnumtrucks@mail.com



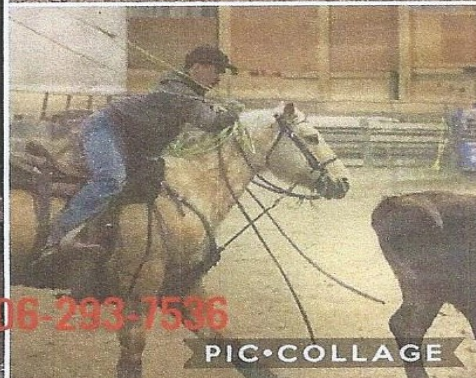
STRENGTH EQUIPMENT
CARDIO
SUPPLEMENTS
TANNING BEDS
TANNING SUPPLIES

425 CENTRE ST.
SHAUNAVON, SK
SON 2MO

JUSTIN MATYKA
306-297-3755

BERTRAM HORSE TRAINING

www.mbstampede.com



Contact Lucas @ 306-293-7536

PIC•COLLAGE

HEADWATER

SALES, SERVICE, PARTS AND RENTALS

Al Stevenson

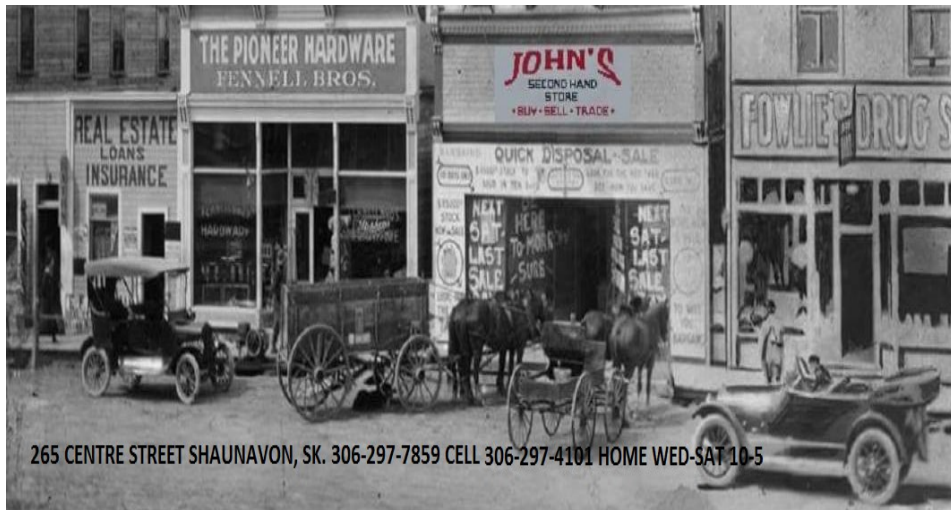
SALES
Saskatchewan Territory

al@hwequipment.com
cell 306.294.0556
toll 1.877.327.8311
office 403.327.3681
fax 403.328.6600

P.O. Box 1533
Lethbridge, Alberta
T1J 4K2
www.hwequipment.com



(306)297-2639
www.PattisonAg.com



265 CENTRE STREET SHAUNAVON, SK. 306-297-7859 CELL 306-297-4101 HOME WED-SAT 10-5



**BINKLEY'S
FUNERAL
SERVICE**
(Shaunavon) Ltd

Rick & Bernadette Schneider

P.O. Box 207
206 Centre Street
Shaunavon, SK
S0N 2M0

Phone: 306-297-2412
Fax: 306-297-2902
Toll Free 1-877-BINKLEY
Email: binkleys@binkleys.com
www.Binkleys.com



*Remembering
Now & Forever™*



LEAF & POWDER
ENTERPRISES INC.

~ **Underground Sprinklers** ~

MIKE GREENLAY

Box 333, Shaunavon, Sask. S0N 2M0

PHONE (306) 297-3840